



Chein Fa Industrial Co., Ltd.

No. 98, Yung Kang St., Yung kang City, Tainan County 710, Taiwan
(R.O.C)

TEL: 886-6-2322952

FAX: 886-6-2012506

WWW.CHEIN-FA.COM

E-MAIL: cf885675@ms79.hinet.net

DRILL POINT DIES SPECIFICATION

No.1 DRILL POINT DIES

DP DIE CODE	DRILL DIA. (DΦ)	FLUTE LENGTH (L)	DRILL LENGTH (C)	MAX MATERIAL THICKNESS	DP DIE STYLE
L1-22	2.2	2.7	1.7	1.0	<i>STYLE I</i> <i>STYLE II</i>
-23	2.3				
L1-27	2.7	3.4	2.4	1.5	
-28	2.8				
-29	2.9				
-30	3.0				
-31	3.1				
L1-32	3.2	4.2	3.2	2.1	
-33	3.3				
-34	3.4				
-35	3.5				
-36	3.6				
L1-37	3.7	5.0	4.0	2.8	
-38	3.8				
-39	3.9				
-40	4.0				
-41	4.1				
L1-43	4.3	6.0	5.0	3.6	
-45	4.5				
-47	4.7				
L1-49	4.9	7.2	6.2	4.5	<i>STYLE II</i>
-51	5.1				
-53	5.3				
-55	5.5				
-57	5.7				

No.2 DRILL POINT DIES

DP DIE CODE	DRILL DIA. (DΦ)	FLUTE LENGTH (L)	DRILL LENGTH (C)	MAX MATERIAL THICKNESS	DP DIE STYLE																																																											
L2-22	2.2	3.2	2.2	1.5	<i>STYLE I STYLE II</i>																																																											
-23	2.3					L2-27	2.7	4.0	3.0	2.1	-28	2.8	-29	2.9	-30	3.0	-31	3.1	L2-32	3.2	4.9	3.9	2.8	-33	3.3	-34	3.4	-35	3.5	-36	3.6	L2-37	3.7	5.8	4.8	3.6	-38	3.8	-39	3.9	-40	4.0	-41	4.1	L2-43	4.3	6.9	5.9	4.5	-45	4.5	-47	4.7	L2-49	4.9	8.0	7.0	5.3	<i>STYLE II</i>	-51	5.1	-53	5.3	-55
L2-27	2.7	4.0	3.0	2.1																																																												
-28	2.8																																																															
-29	2.9																																																															
-30	3.0																																																															
-31	3.1																																																															
L2-32	3.2	4.9	3.9	2.8																																																												
-33	3.3																																																															
-34	3.4																																																															
-35	3.5																																																															
-36	3.6																																																															
L2-37	3.7	5.8	4.8	3.6																																																												
-38	3.8																																																															
-39	3.9																																																															
-40	4.0																																																															
-41	4.1																																																															
L2-43	4.3	6.9	5.9	4.5																																																												
-45	4.5																																																															
-47	4.7																																																															
L2-49	4.9	8.0	7.0	5.3	<i>STYLE II</i>																																																											
-51	5.1																																																															
-53	5.3																																																															
-55	5.5																																																															
-57	5.7																																																															

No.3 DRILL POINT DIES

DP DIE CODE	DRILL DIA. (DΦ)	FLUTE LENGTH (L)	DRILL LENGTH (C)	MAX MATERIAL THICKNESS	DP DIE STYLE
L3-27	2.7	4.7	3.7	2.8	<i>STYLE I</i> <i>STYLE II</i>
-28	2.8				
-29	2.9				
-30	3.0				
-31	3.1				
L3-32	3.2	5.7	4.7	3.6	
-33	3.3				
-34	3.4				
-35	3.5				
-36	3.6				
L3-37	3.7	6.7	5.7	4.5	
-38	3.8				
-39	3.9				
-40	4.0				
-41	4.1				
L3-43	4.3	7.7	6.7	5.3	
-45	4.5				
-47	4.7				
L3-49	4.9	9.0	8.0	6.3	
-51	5.1				
-53	5.3				
-55	5.5				
-57	5.7				

No.4 DRILL POINT DIES

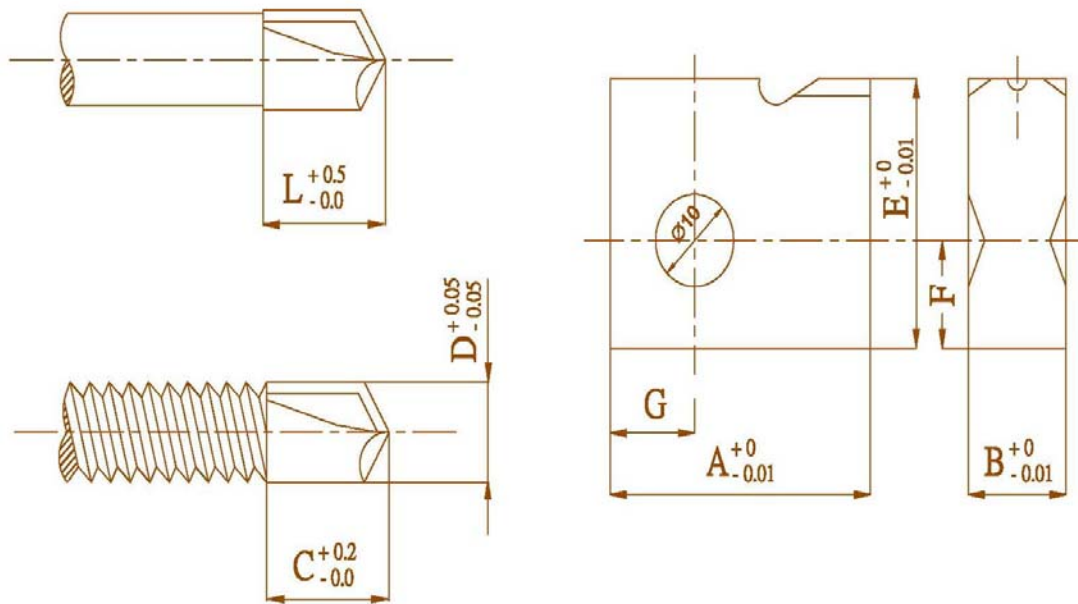
DP DIE CODE	DRILL DIA. (DΦ)	FLUTE LENGTH (L)	DRILL LENGTH (C)	MAX MATERIAL THICKNESS	DP DIE STYLE
L4-43	4.3	8.7	7.7	6.3	<i>STYLE II</i>
-45	4.5				
-47	4.7				
L4-49	4.9	11.7	10.7	9.0	<i>STYLE III</i>
-51	5.1				
-53	5.3				
-55	5.5				
-57	5.7				

No.5 DRILL POINT DIES

DP DIE CODE	DRILL DIA. (DΦ)	FLUTE LENGTH (L)	DRILL LENGTH (C)	MAX MATERIAL THICKNESS	DP DIE STYLE
L5-49	4.9	14.7	13.7	12.0	<i>STYLE III</i>
-51	5.1				
-53	5.3				
-55	5.5				
-57	5.7				

No.6 DRILL POINT DIES

DP DIE CODE	DRILL DIA. (DΦ)	FLUTE LENGTH (L)	DRILL LENGTH (C)	MAX MATERIAL THICKNESS	DP DIE STYLE
L6-49	4.9	17.7	16.7	15.0	<i>STYLE III</i>
-51	5.1				
-53	5.3				
-55	5.5				
-57	5.7				



DIE STYLE	A	B	E	F	G
<i>STYLE I</i>	31.75	12.70	25.40	11.4	10.7
<i>STYLE II</i>	31.75	20.00	32.00	18.0	10.7
<i>STYLE II</i>	45.00	30.00	32.00	16.0	16.0

Category of Material : (1) High-Speed Steel ; (2) Tungsten Carbide